



**ALASKA DIVISION OF HOMELAND SECURITY &  
EMERGENCY MANAGEMENT**



**SITUATION REPORT 22-006 • JANUARY 06, 2022**

Toll-Free 1.800.478.2337

Anchorage Area 907.428.7000

SEOC 907.428.7100

<p><b><u>SEOC Preparedness Level</u></b> Level 2 – Heightened Awareness</p>	<p><a href="http://ready.alaska.gov">http://ready.alaska.gov</a></p>	<p><b><u>National Terrorism Advisory System:</u></b> <a href="#">Read the updated NTAS Bulletin here</a></p>
<p><b><u>Maritime Security (MARSEC)</u></b> Level:1-Minimum Appropriate Security Measures</p>	<p><b>WHO Novel Coronavirus Pandemic (COVID-19):</b> <a href="#">2019 Novel Coronavirus</a></p>	<p><b><u>Alaska Military Installation Force Protection Level:</u></b> FPCON Bravo</p>

(Significant changes from previous situation reports are in red.)

**Significant Issues:**

**Matanuska-Susitna Borough Wind Storm:**

The SEOC continues to work with the Mat-Su Borough on their response to the windstorm and extreme cold weather last weekend. An emergency management specialist remains deployed to the Mat Su Borough EOC by the SEOC. **As of 8:30 A.M. today, MEA still has 520 connections in Mat-Su without power.**

**Interior Winter Storm:**

The SEOC continues to work with the Fairbanks North Star and Denali Boroughs, and Delta Junction to address damage assessment and individual assistance issues.

**Threat Level Changes:**

None

**State of Alaska Department of Health and Social Services (DHSS)**

DHSS is now leading the State of Alaska COVID-19 Recovery through Department Operations, supported by SEOC and other state departments as required.

For current COVID-19 information, see:

<https://covid19.alaska.gov/>

<https://www.cdc.gov/coronavirus/2019-ncov/index.html>

**NTAS BULLETIN**

To read current or expired advisories, click the link below:

<https://www.dhs.gov/national-terrorism-advisory-system>

**Travel Alerts and Conditions**

For current driving conditions dial 511 or link to <http://511.alaska.gov/>

## Barry Arm Landslide / Tsunami Risk

For the latest information on the Barry Arm Landslide and Tsunami risk, click here:  
[DGGG Barry Arm Landslide and Tsunami Hazard](#)

## Recent Earthquakes

USGS Earthquake Information: <http://earthquake.usgs.gov/>  
National Tsunami Warning Center: <http://tsunami.gov/>

## Alaska Volcanoes

**Great Sitkin** Alert Level: **Watch** and Aviation Color Code: **Orange**  
**Pavlof** Alert Level: **Watch** and Aviation Color Code: **Orange**  
**Semisopchnoi** Alert Level: **Watch** and Aviation Color Code: **Orange**  
For Alaska Volcano updates, go to: <https://www.avo.alaska.edu/>

## Air Quality Index (AQI) Advisories

A Stage One Alert is in effect for Fairbanks until **2:00 P.M. tomorrow.**  
A Stage Two Alert is in effect for North Pole until **2:00 P.M. tomorrow.**

For the most up to date Air Quality Index Advisories:  
<http://dec.alaska.gov/Applications/Air/airtoolsweb/Home/Index>

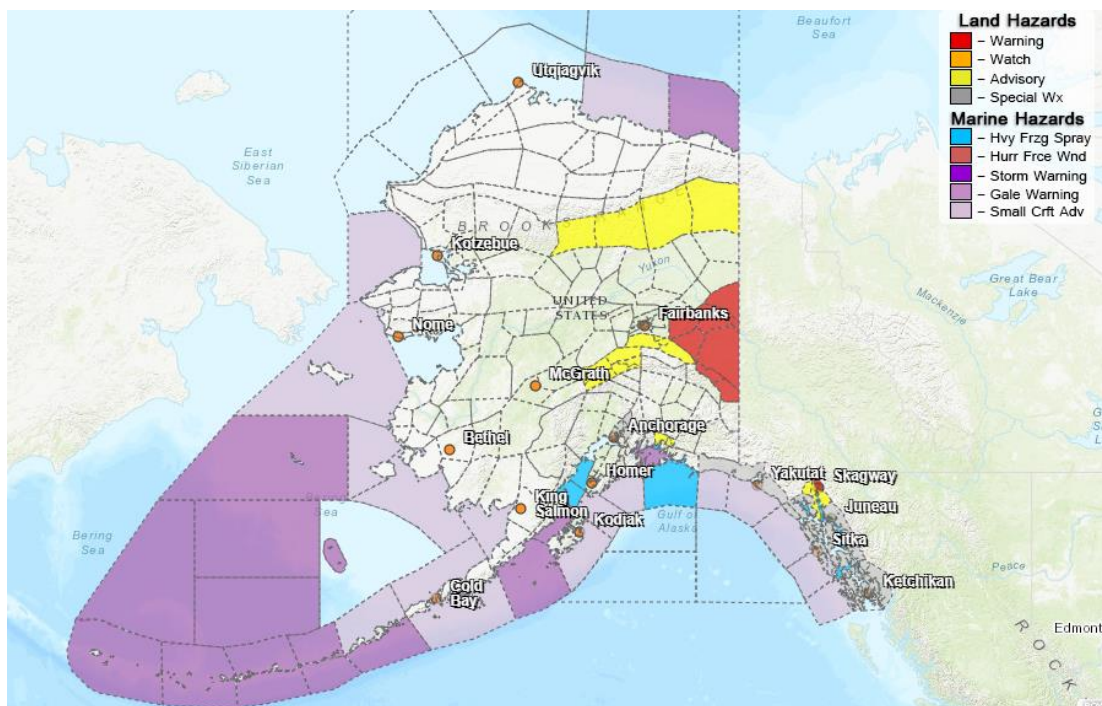
## Spills of Oil and Hazardous Substances

The ADEC Spill Prevention and Response page is located at:  
<http://dec.alaska.gov/spar/ppr/spill-information/response/>

## Alaska Cyber Security Information

State Employees may sign up for cyber security notifications and alerts at  
<https://oit.alaska.gov/security>

## Significant Weather:



A High Wind Warning is in effect until 9:00 A.M. today for Taiya Inlet and the Klondike Highway.

A Winter Weather Advisory is in effect for the Southeastern Brooks Range until noon tomorrow.

Wind Chill Advisories and Warnings are in effect for the following areas:

- Upper Tanana Valley along the Yukon River near Eagle until noon today.
- Denali and Deltana and Tanana Flats until noon today.
- Thompson Pass until noon today.
- Taiya Inlet and the Klondike Highway until 9:00 A.M. tomorrow.
- Haines until 10:00 A.M. today.

A Special Weather Statement remains in effect for the Matanuska Valley. Sustained winds of 20 to 35 mph with gusts to 55 mph are expected to return to the region Friday afternoon and continue into Saturday morning. Wind chills ranging from 15 to 30 degrees below zero are also expected across the area.

A Special Weather Statement has been issued for much of the southern panhandle. 6 to 12 inches of snow are possible beginning Saturday morning before the precipitation changes to rain as a warm front moves into the area.

For more information and the most current weather, Watches / Warnings / Advisories go to:  
<http://www.weather.gov/arh>.

### **Avalanche Forecast:**



There are areas near Haines and Chilkat Lake with moderate risk, and areas near Valdez, the Richardson Highway and Cordova with moderate and considerable risk.

Check the Avalanche Forecast Center closest to your area for the most up to date information on avalanche potential. <https://alaskasnow.org> or <https://www.weather.gov/afc/avalancheweather>

**The Next Situation Report:** will be 7 January 2022. A significant change in the situation or the threat level will prompt an interim report.

This report is posted on the internet at <https://ready.alaska.gov/sitrep>. To register for email distribution, go to <http://list.state.ak.us/mailman/listinfo/dhsem.situation.report>. Direct questions regarding this report to the SEOC at 907-428-7100 or [seoc@alaska.gov](mailto:seoc@alaska.gov)